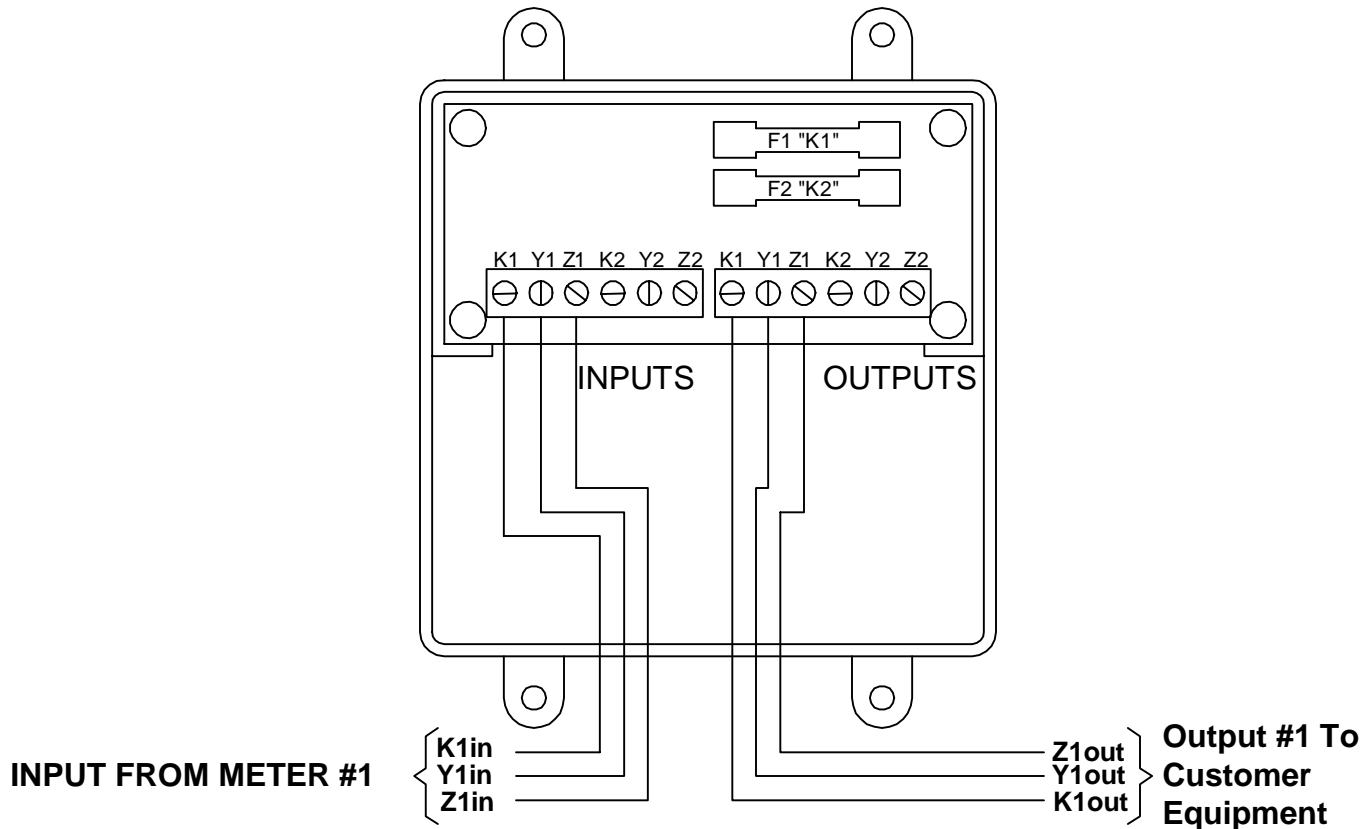


# INSTRUCTION SHEET

## CID-2 CUSTOMER INTERFACE DEVICE



**MOUNTING POSITION** - The CID-2 can be mounted in any position.

**POWER INPUT** - None. The CID-2 is a pulse output termination device with a fuse in series with each "K" terminal between the inputs and outputs. Arc suppression is supplied across the contacts. Pulses are supplied to the device by an external source, usually an electric meter.

**METER CONNECTIONS** - Two isolated channels are provided. The CID-2's "K1", "Y1" and "Z1" input terminals should be connected to the meter's "K", "Y" and "Z" terminals. Connect the CID-2's second input terminals to different pulse output on the meter (or to a different meter's KYZ output).

**FUSES** - The fuses are type 3AG and may be up to 2 Amps in size. Two 1/2 Amp fuses are supplied standard with the unit.

**OUTPUT** - The output is configured as a 3-wire output, however K&Y or K&Z may be used in the 2-wire mode depending on the wiring of the CID-2 from the meter. Arc suppression is provided internally by a RC "snubber" network. While the snubber network may help limit arcing and transients on the contacts of the KYZ switch, it is not intended to provide isolation between the meter and customer's equipment such as that provided by an isolation relay.

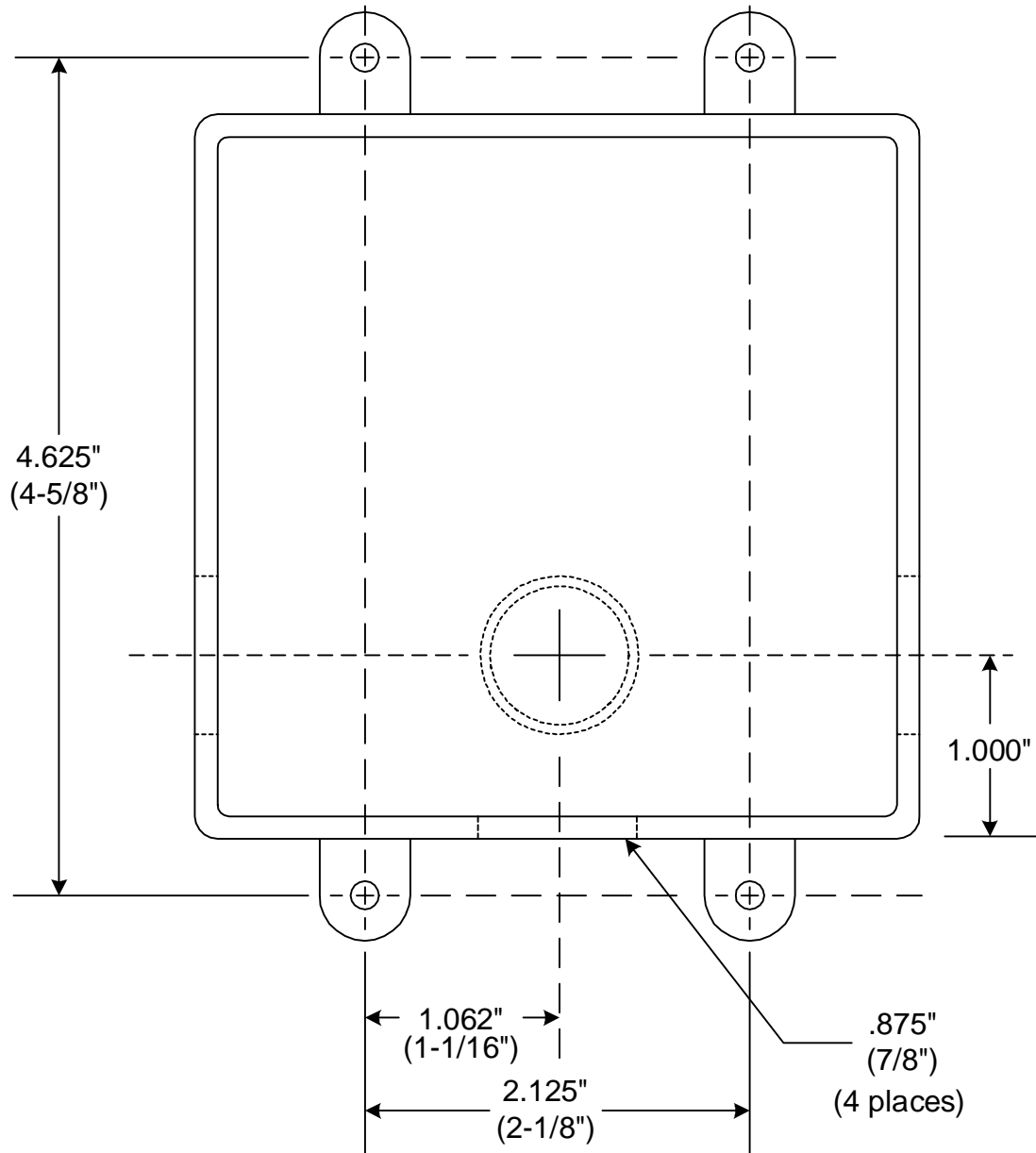


## SOLID STATE INSTRUMENTS

a division of Brayden Automation Corp.  
 6230 Aviation Circle, Loveland, Colorado 80538  
 Phone: (970)461-9600 Fax: (970)461-9605  
 E-mail: support@solidstateinstruments.com

# MECHANICAL DETAILS

## CID-1/CID-2/TID-1



Enclosure has four knockouts for 1/2" conduit connections.



## SOLID STATE INSTRUMENTS

a division of Brayden Automation Corp.  
6230 Aviation Circle, Loveland, Colorado 80538  
Phone: (970)461-9600 Fax: (970)461-9605  
E-mail: support@solidstateinstruments.com