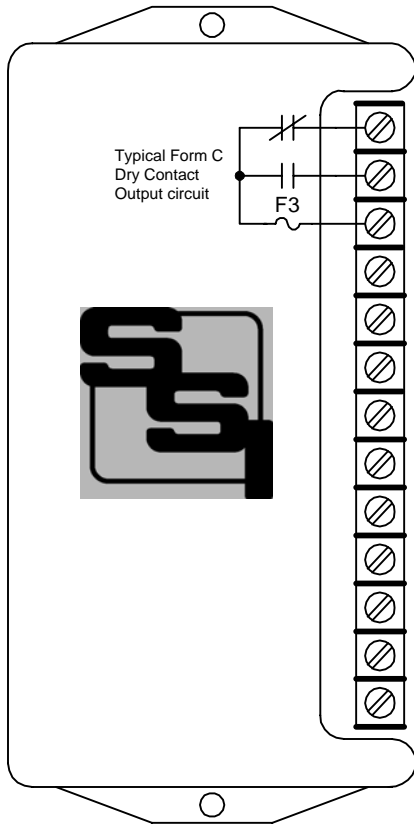


RPR-3LS

Elite Solid State

PULSE ISOLATION RELAY INSTRUCTION SHEET



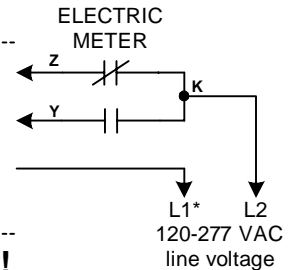
- Z3 →
- Y3 → **OUTPUT #3**
- K3 ←

- Z2 →
- Y2 → **OUTPUT #2**
- K2 ←

- Z1 →
- Y1 → **OUTPUT #1**
- K1 ←

- Zin →
- Yin → **INPUT**
- Kin ←
- GND ←

CAUTION - Risk of electric shock!
All circuitry on the input side of the RPR-3LS is at line voltage potential.



*Must be neutral, if used

MOUNTING POSITION - The RPR-3LS can be mounted in any position.

INPUT - The RPR-3LS is powered by an AC line voltage of between 90 and 300 volts. Connect the L1 voltage of the AC line to the RPR-3LS' (relay) **Kin** terminal. Connect the L2 voltage of the AC line to the K terminal on the pulse initiator of the meter. If Neutral is used, it must be connected to the Kin terminal. The RPR-3LS will not operate without all three wires between it, the power supply and the meter as shown on Page 2. Connect the RPR-3LS' **GND** terminal to the electrical system ground. The RPR-3LS' power supply is auto-ranging and does not require any configuration for any voltage in the operating range. No other power supply is required to use the RPR-3LS relay. The meter's KYZ pulse initiator must be rated for the line voltage used.

FUSES - The fuses are type 3AG and may be up to 1/2 Amp in size. Three 1/2 Amp fuses (F1, F2 & F3) are supplied standard with the unit unless otherwise specified.

OUTPUTS - Three 3-wire isolated outputs are provided on the RPR-3LS, with output terminals K1, Y1 & Z1; K2, Y2, & Z2; and K3, Y3, & Z3. Typical output circuit shown above. Arc suppression for the contacts of the solid-state relays is provided internally.



SOLID STATE INSTRUMENTS

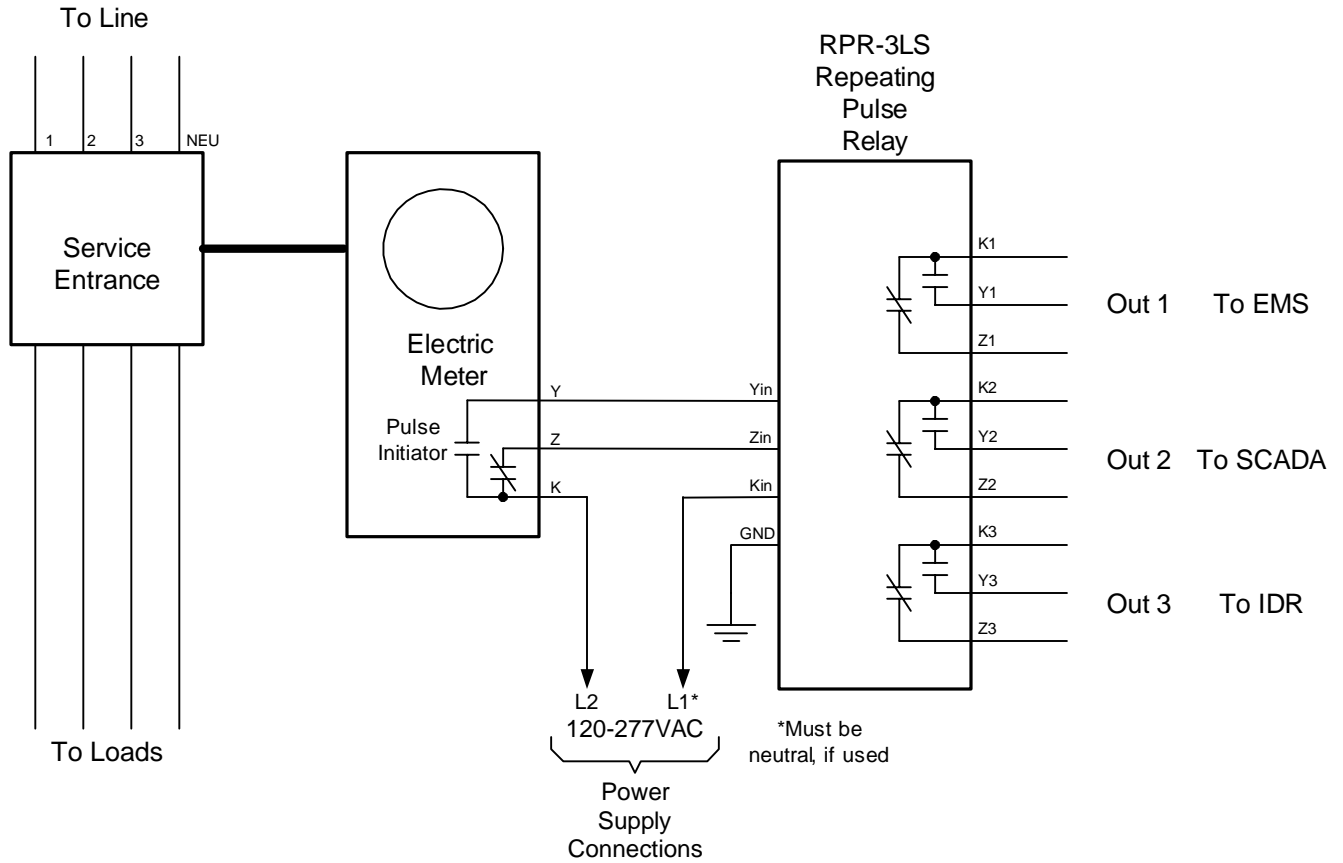
a division of Brayden Automation Corp.

6230 Aviation Circle, Loveland, Colorado 80538

Phone: (970)461-9600 Fax: (970)461-9605

E-mail: support@solidstateinstruments.com

RPR-3LS Wiring Diagram



RPR-3LS Repeating Pulse Relay Wiring Diagram		REVISIONS		
		NO.	DATE	DESCRIPTION
DATE ORIGINAL	SCALE			
07/27/10	N/A			
LATEST REVISION	JOB NO.	CHECKED	DRAWN	
			WHB	

**Brayden Automation Corp./
Solid State Instruments div.**
6230 Aviation Circle
Loveland, CO 80538
(970)461-9600
(970)461-9205 fax
www.solidstateinstruments.com